

engineering innovation



NATIONAL 634 EXCITES THE WORLD
approved by major OEM's



Plug-in Brush Holders

Morgan Carbon can offer Plug-in Brush Holders designed for

- Quick changeover
- Minimised downtime
- Improved health and safety



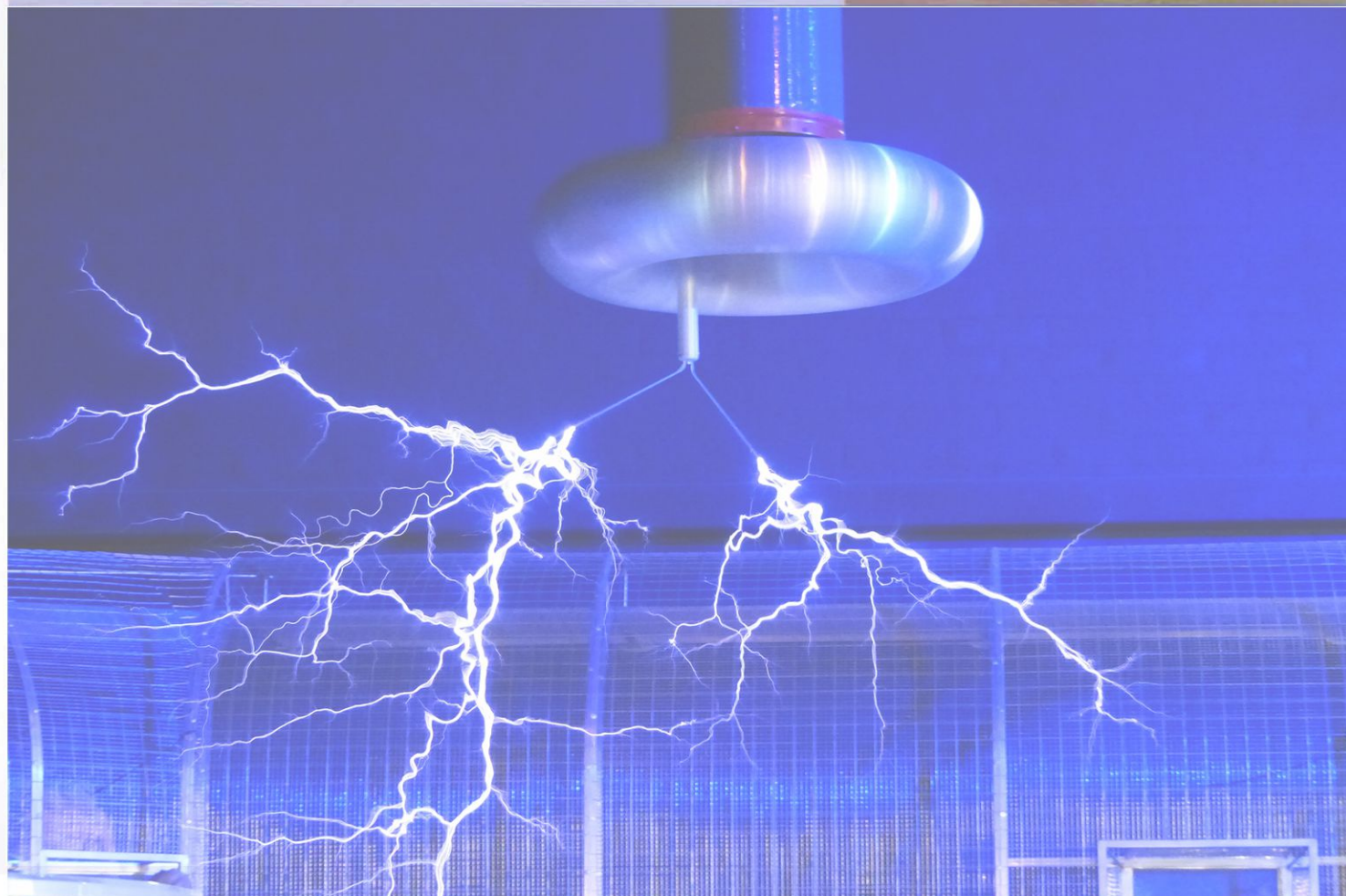
Morgan Carbon

A Global Organisation with Local Support.

A World Leader in Carbon Technology

Over a Century of Expertise

Offering Carbon Brushes, Holders, Commutators, Slip Rings

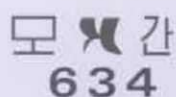


How to recognize 634:

- ✓ Constant and reliable performance
- ✓ Low and stable friction
- ✓ Low wear of both brush and slip ring surface
- ✓ Even current sharing across all the excitation brushes
- ✓ Consistent contact drop
- ✓ Minimal polarity wear differences



Morgan Carbon offer genuine National 634 material for your application



NCC634



4N4
634



634
NKF

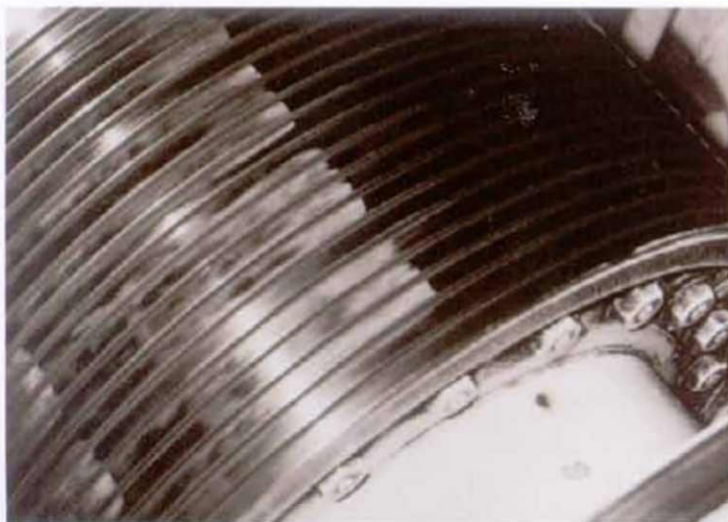


Before applying 634 we consider:

- Application type and environment
- Slip ring material and dimensions
- Surface speed / current density / spring pressure
- Surface film / brush / slip ring wear
- Temperature - ambient, brush and slip ring
- Ventilation arrangements
- Duty cycle / helical grooving of the slip rings
- Application problems such as ghosting, uneven current sharing

After applying genuine 634:

You have the assurance of optimum brush performance, supported by our capable and skilled application engineers.



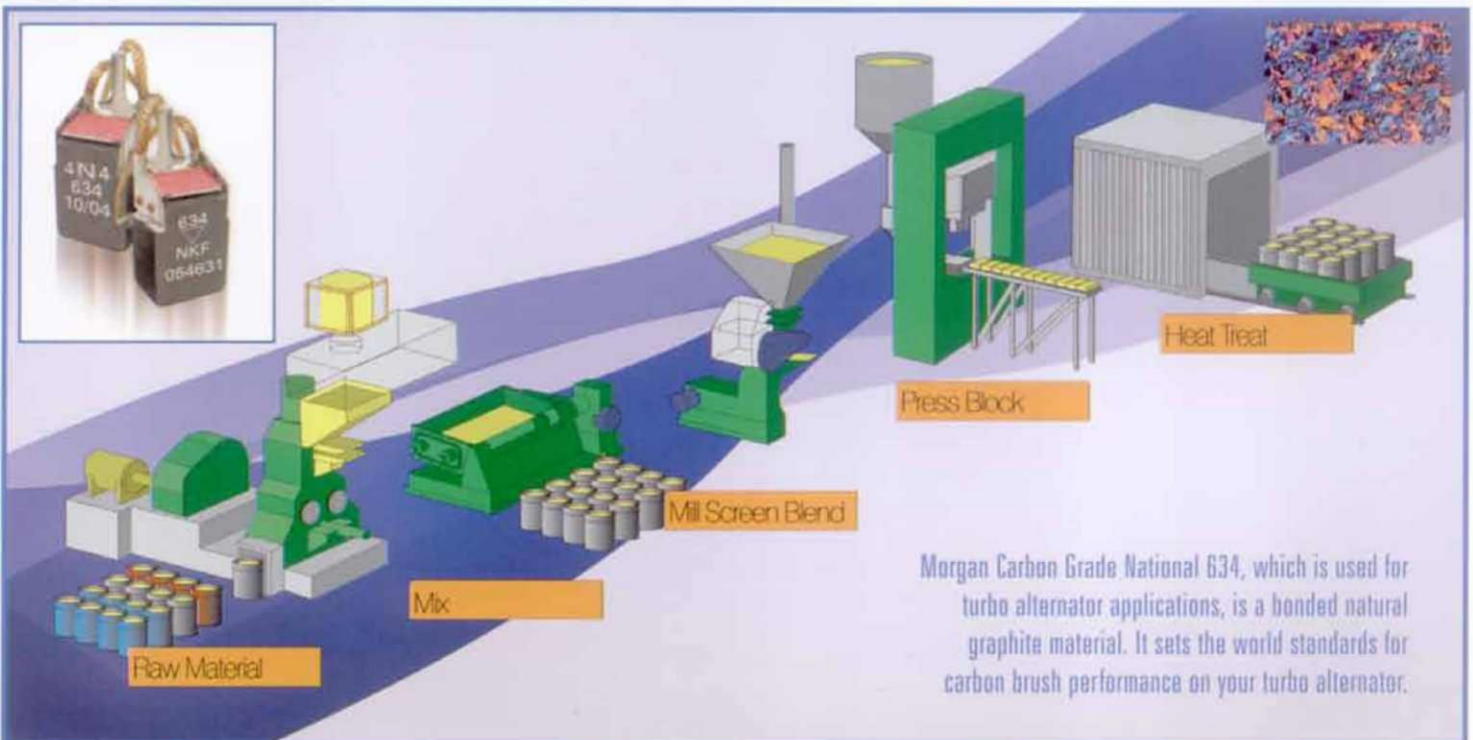


Morgan Analytical capability supporting Application and Testing

Research and development is at the core of our business. Coupled with our global experience, this gives Morgan Carbon the ability and facilities to ensure optimum brush-grade performance.

In control from raw material to application

National 634's composition processing, performance and testing are carefully controlled by Morgan to ensure the highest standards of performance available today



Morgan Can offer:-

- Local Sales Engineering Support
- Application Engineering Technical Support Team
- Over a Century of Experience in Carbon Brush Technology
- Test & Development Facilities
- Technical Training Courses

- Held on site at a Morgan regional business unit or in our technical centre of excellence

